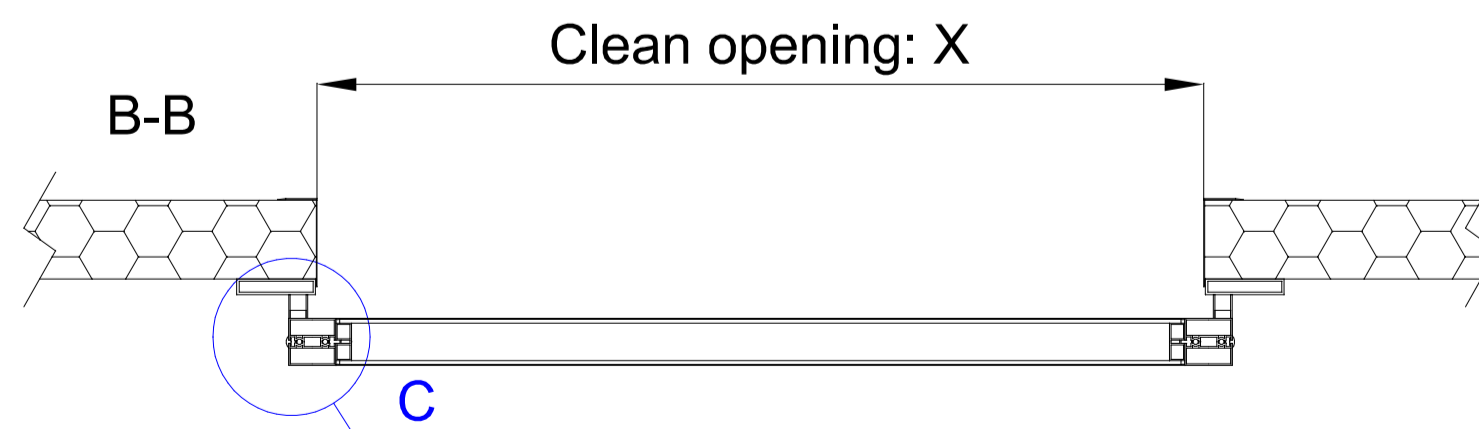
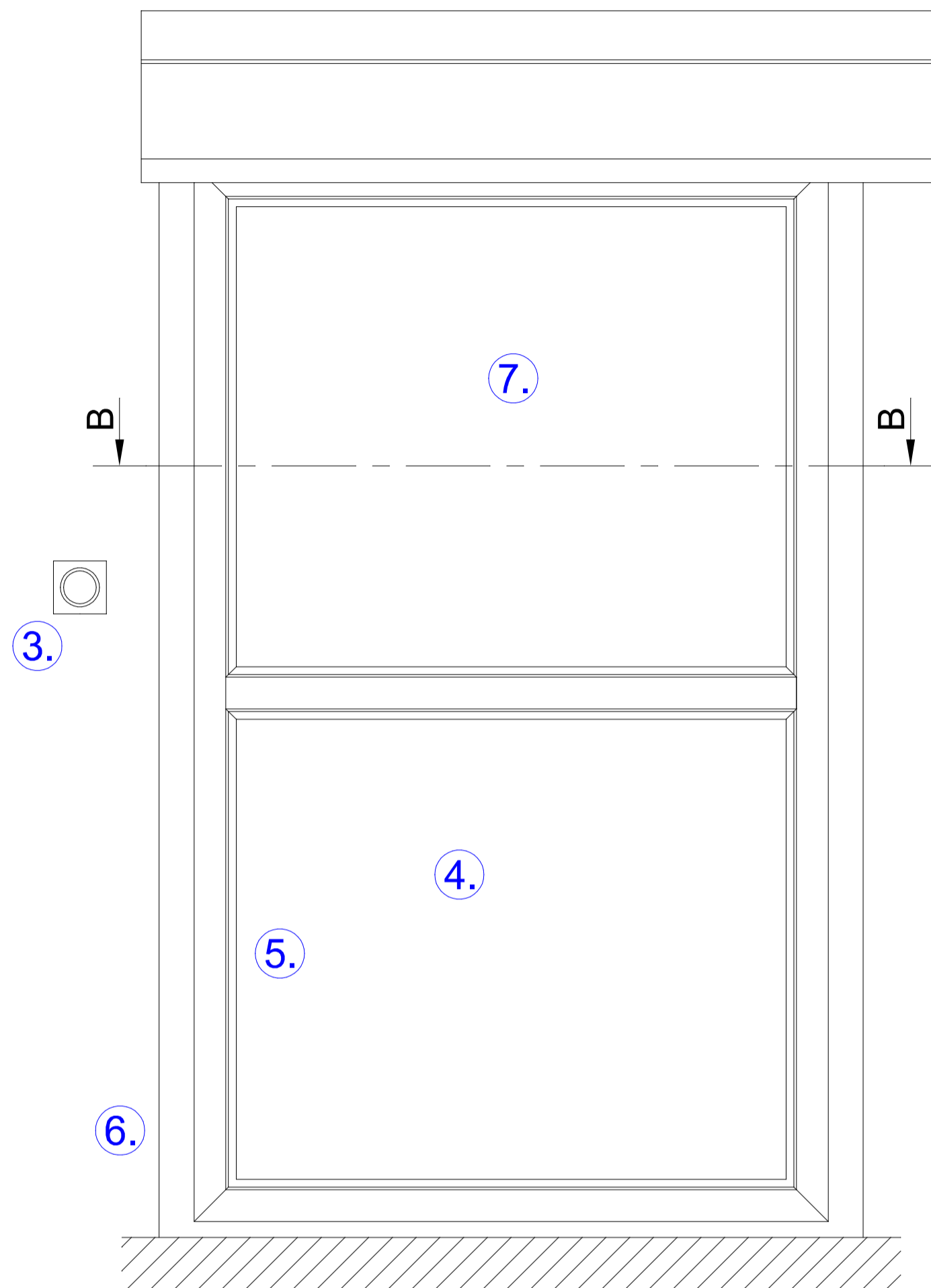
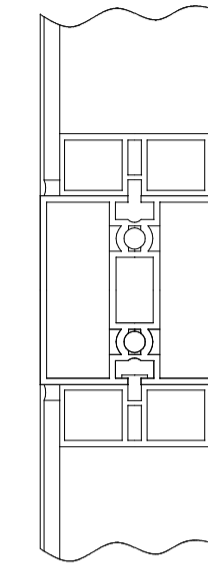


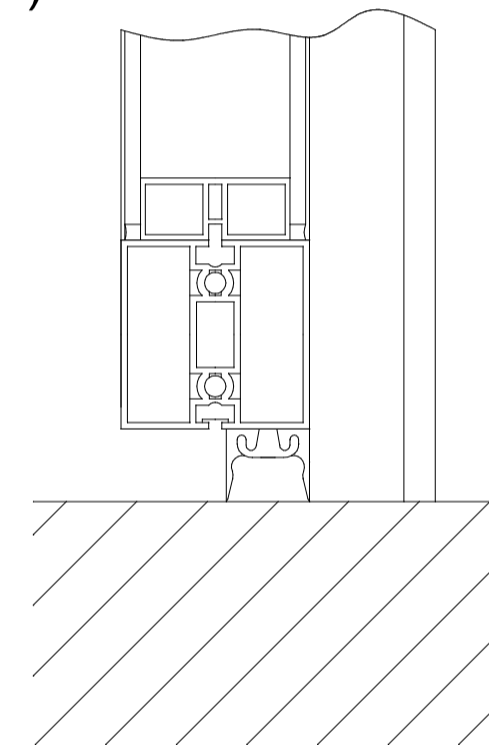
Dimension range:  
 X: 700-1000 mm  
 Y: 1800-2400 mm



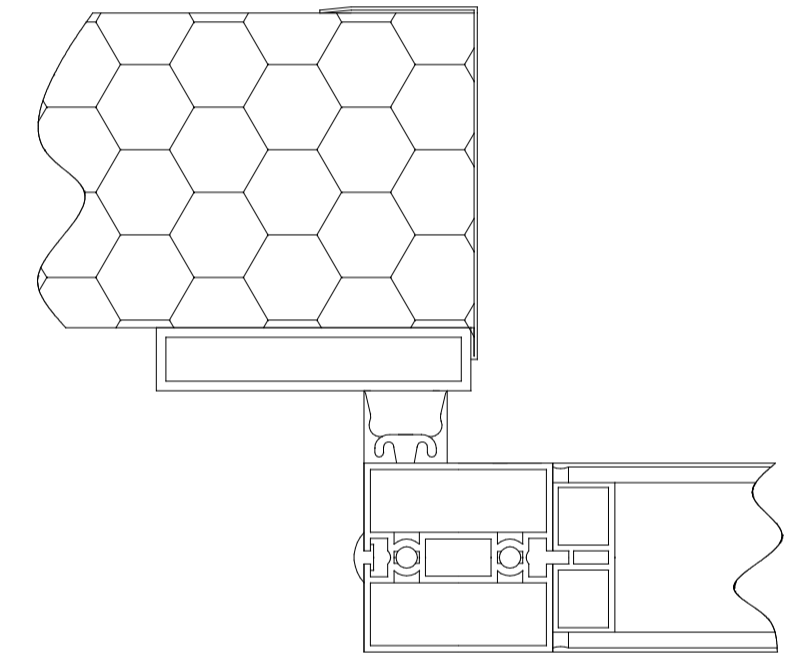
A(1:4)



B(1:4)



C(1:4)



	Name	Material	Specificate
1.	Sliding door mechanics	Alu	Fermoclean system
2.	Sliding door cover	Alu	RaI9002 powdercoating
3.	Door opener	-	Red/green indicator lights
4.	Panel	Steel	Anodised or powder c.
5.	KleanLabs cr. profiles	Alu	Airtight profile system
6.	Kleanlabs cr. frames	Alu	Anodised or powder c.
7.	Glazing	Glass	Safety glass

Title:  
 KleanLabs TT60-S  
 Sliding door

Project:

Date:  
 2021.03.26

Sheet:

A3

Planner:  
 Istvánfy A.

