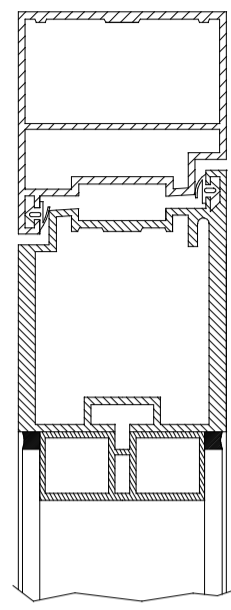
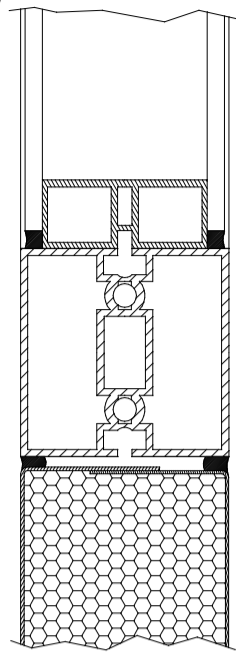


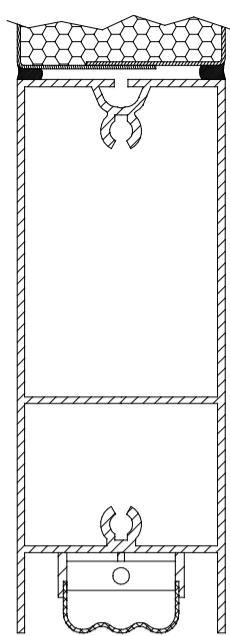
C(1:4)



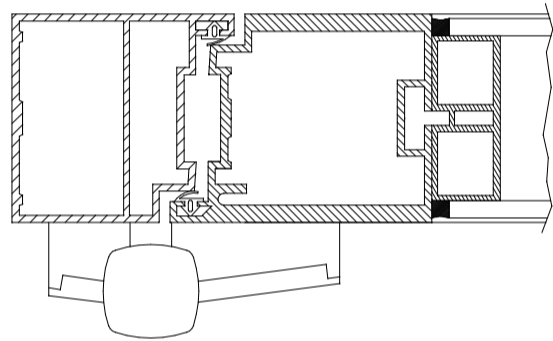
D(1:4)



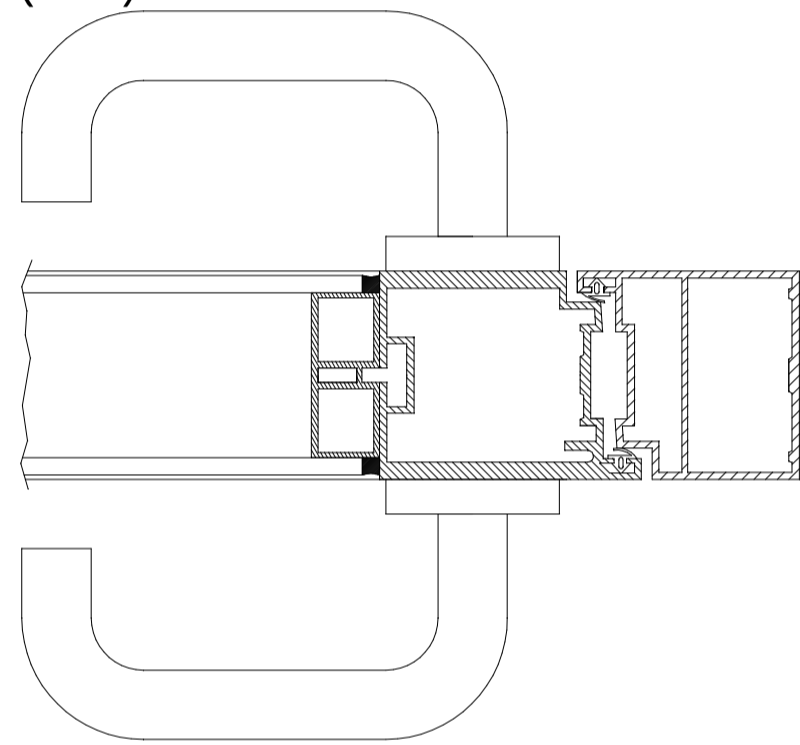
E(1:4)



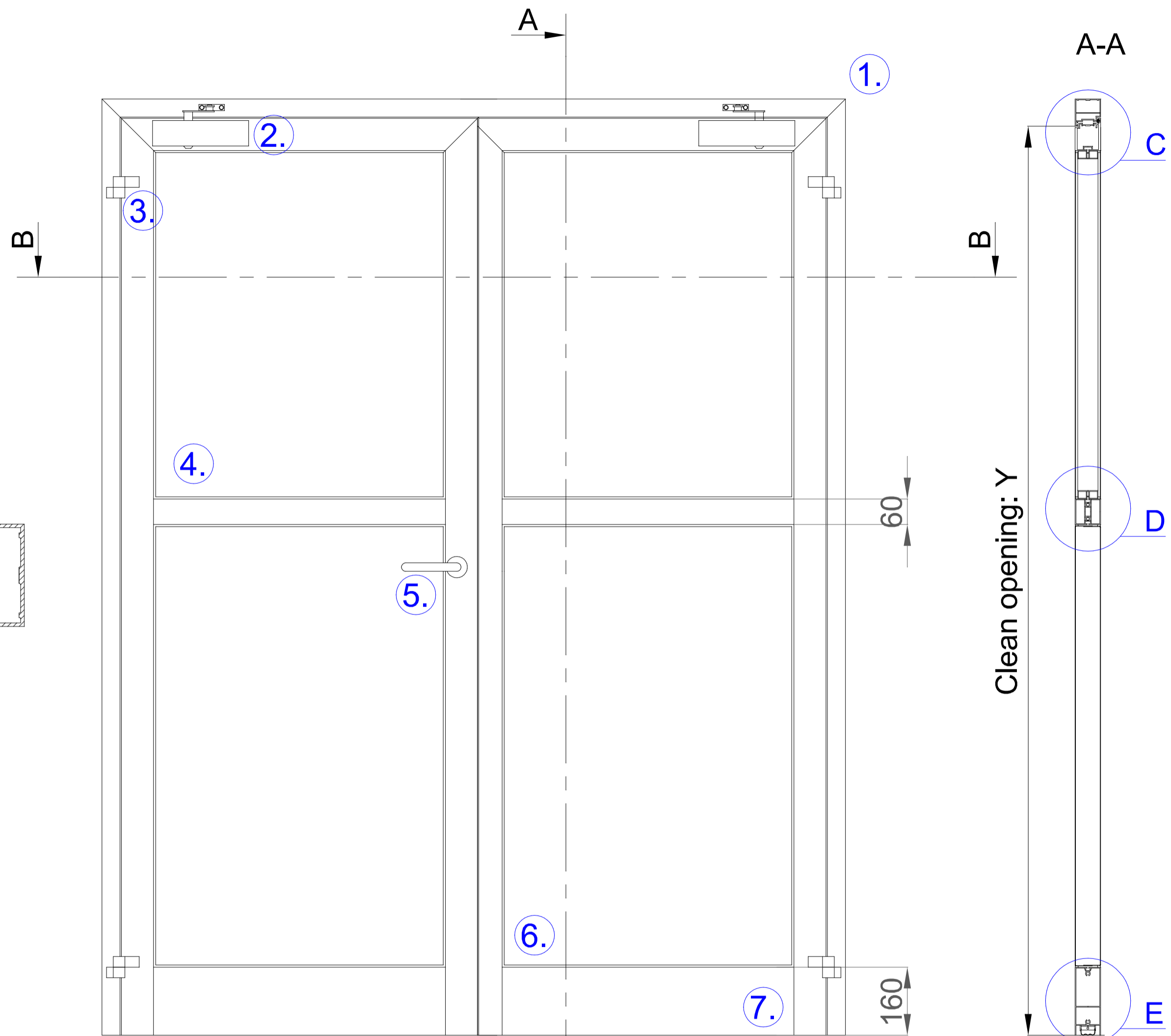
F(1:4)



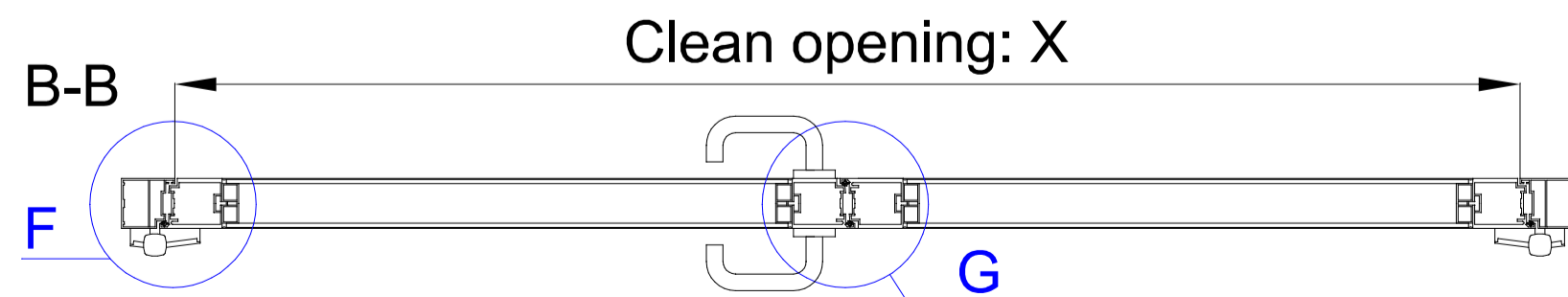
G(1:4)



Dimension range:  
X: 1000-2000 mm  
Y: 1800-2400 mm



	Name	Material	Specificate
1.	KleanLabs cleanroom profiles	Alu	Airtight profiles
2.	Door closer	Steel	GEZE TS
3.	Dr.Hahn hinges	Steel	Serie 60AT
4.	Glazing	Glass	Safety glass
5.	Door handles	Steel	Stuv FS
6.	Panel	Alu	Elox or powder coated
7.	Threshold	Alu	Automatic



Title:  
KleanLabs TT60-2  
Cleanroom door 2 leaf

Project:  
Date:  
2021.03.26

Sheet:  
A3  
Planner:  
Istvánfy A.

